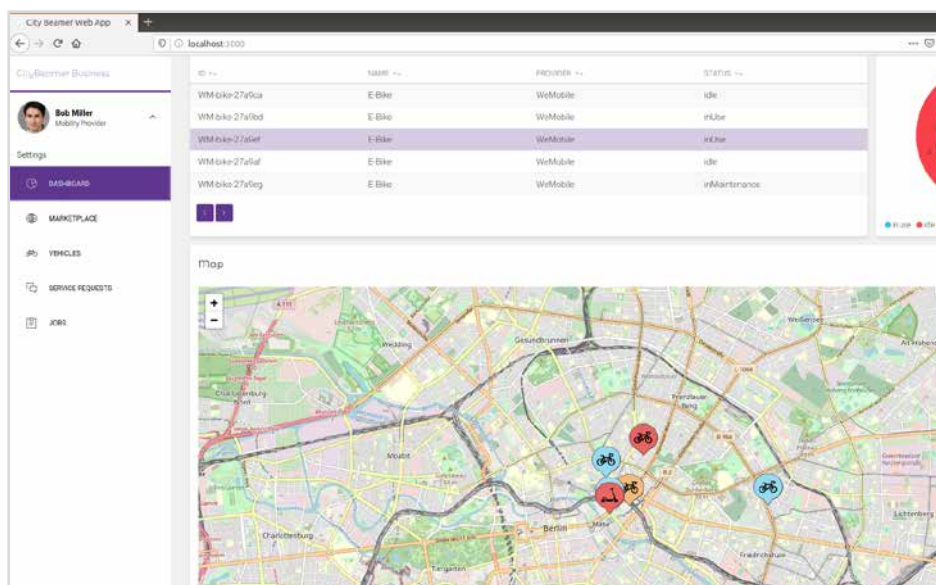


Digital Cities

CityBeamer™



STARTUP CREATION: CITYBEAMER (THE NETHERLANDS)
PARTNERS: InnoTractor (The Netherlands), Datacon (The Netherlands),
TU Berlin (Germany), Telecom Italia (Italy)



Enables viable Micro-mobility business through SaaS solutions

CityBeamer™ has created mobility SaaS infrastructures and applications which enable cost-reduction and margin improvement for micro-mobility systems. We help bike sharing companies operate a sustainable and profitable business.

Micro-mobility service providers are often faced with high cost and negative margins. CityBeamer™ will support the healthy business case by offering tools to reduce cost of logistics and maintenance and to offer apps and platforms which allow higher value-add services.

CityBeamer™ will reduce operational cost for micro-mobility providers by offering a platform service which can connect the demand from multiple micro-mobility service providers for logistics services like bike-relocation / maintenance / repair

with service providers. This will enable pooled services and competition which will reduce cost.

CityBeamer™ also develops a service which enables bike-sharing for touristic city tours with typical features in the application which make it suitable for the tourist target audience. This service will have a higher added value and hence allow the micro-mobility service provider a higher margin.



**THE FUTURE OF
EUROPE'S DIGITAL
INNOVATION**

eitdigital.eu

[f](#) [o](#) [i](#) [n](#) [t](#) @EIT_Digital



EIT Digital is supported by the EIT,
a body of the European Union

Competitive Advantages

- New logistics / maintenance brokerage platform which addresses a real pain for micro-mobility service providers
- New added value tourist service which will enable higher margins
- SaaS service which means that new features and functionality will be included
- Cloud based platform which ensures scalability
- White labelled application so you can apply your own branding
- Complete suite of services: CityBeamer™ can deliver smart locks, IoT platform, transportation service provider back office and user applications on Android and iOS

Target Markets

- Direct: micro-mobility service providers (tourist service) and companies specialised in logistics and repair services (logistics and maintenance service platform)
- Indirect:
 - Tourists, tourist agencies, governmental bodies dealing with tourism
 - Municipalities with challenges in mobility and bike sharing systems
- Markets: primarily European markets with initial focus on NL, IT

Status/ Traction

- Tourist application is in development with Bike.IT, TIM
- Logistics platform is in development with Datacon, TU Berlin and business logic is being discussed with several undisclosed micro-mobility providers

Road Map

2020

- Develop CityBeamer tourist application development and commercialisation. Logistics and maintenance platform 0.9 development and pilot.

2021

- Further development of the logistics and maintenance platform and commercialisation in 2 markets.

2022

- Expansion in multiple markets.



Leveraged Technologies

Next generation IoT devices will be used for connecting all scooters, bikes etc. to the existing Gravity IoT platform. This will be extended with BigData & AI for usage analysis, predictive capacity planning and condition-based maintenance. Distributed Ledger Technologies will be implemented for the OMoLe engine of the solution. Web and Mobile Apps for user facing interactions. The 4G and 5G technologies in NB-IoT and/or CAT M1 will be used for connectivity and positioning/tracking purposes.

Contact



Magrita Noordmans
business developer CityBeamer
e: Magrita.noordmans@innotractor.com
t: +31653769451
Tivolistraat 50 | 5017 HR
Tilburg | Netherlands

 @CityBeamer1
 /company/citybeamer



CityBeamer is an innovation activity proudly supported by EIT Digital.

EIT Digital supports entrepreneurial teams from research and business organisations in launching new startups and new products in agile 12-month projects called innovation activities. These activities are embedded in EIT Digital's European ecosystem and receive a financial co-investment to package their technology, sign up customers and attract investors.